

# ***ProcureMART™ RosettaNet HTTPClient installation procedure V1.3.2***

(for WindowsXP)

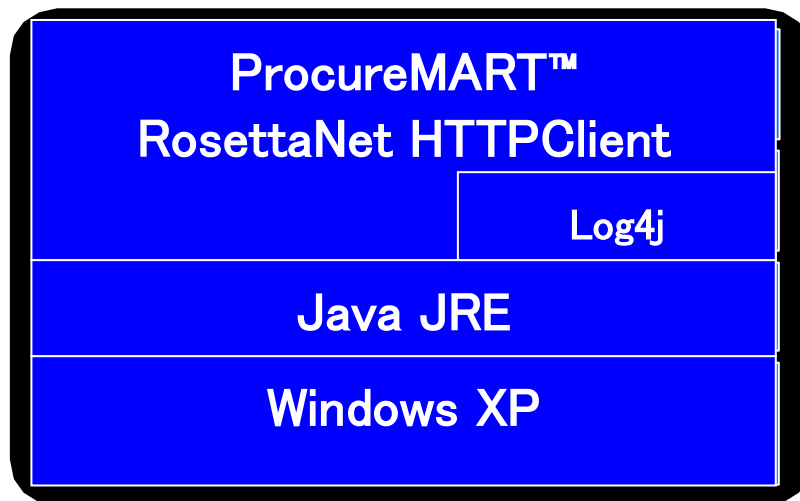
## **Table of contents**

1	ProcureMART™ RosettaNet HTTPClient Architecture.....	2
2	Advance Preparations .....	3
3	Extracting ProcureMART™ RosettaNet HTTPClient.....	4
4	Setup Java JRE (Java Runtime Environment – Standard Edition) .....	5
5	Setup Log4j.....	10
6	Install ProcureMART™ RosettaNet HTTPClient .....	12
7	Confirmation of copied library .....	15
8	Edit configuration file .....	17
9	Edit log4j properties file .....	19
10	Installation Check.....	20
11	Appendix A: list of figures .....	24
12	Appendix B: ProcureMART™ RosettaNet HTTPClient setup information.....	25

## 1 ProcureMART™ RosettaNet HTTPClient

### Architecture

In order to use ProcureMART™ RosettaNet HTTPClient, several Java libraries are required. *Figure 1: ProcureMART™ RosettaNet HTTPClient System Architecture* shows the required library structure. This manual explains the installation procedures for each library step by step, on the premise that OS environment (Windows XP) is installed properly in advance.



**Figure 1: ProcureMART™ RosettaNet HTTPClient System Architecture**

## 2 Advance Preparations

### 2.1 Required deliveries

To install ProcureMART™ RosettaNet HTTPClient, the following files are required:

- ProcureMART™ RosettaNet HTTPClient distribution (RNHTTPClient\_V1.3.2.zip)
- Log4j (jakarta-log4j-1.1.3.zip)

This package can be obtained from:

<http://archive.apache.org/dist/logging/log4j/1.1.3/>

### 2.2 Required setup information

Fill in the chart of “Section 12: Appendix B: ProcureMART™ RosettaNet HTTPClient setup information” before installation.

### 3 Extracting ProcureMART™ RosettaNet HTTPClient

Since ProcureMART™ RosettaNet HTTPClient is distributed as a Zipped file, it has to be extracted as a first step. The extracted files can be allocated anywhere in the system, and their total file size will be about 17MB.

The extracted folder is described as *<ExtractedDirectory>* in this document.

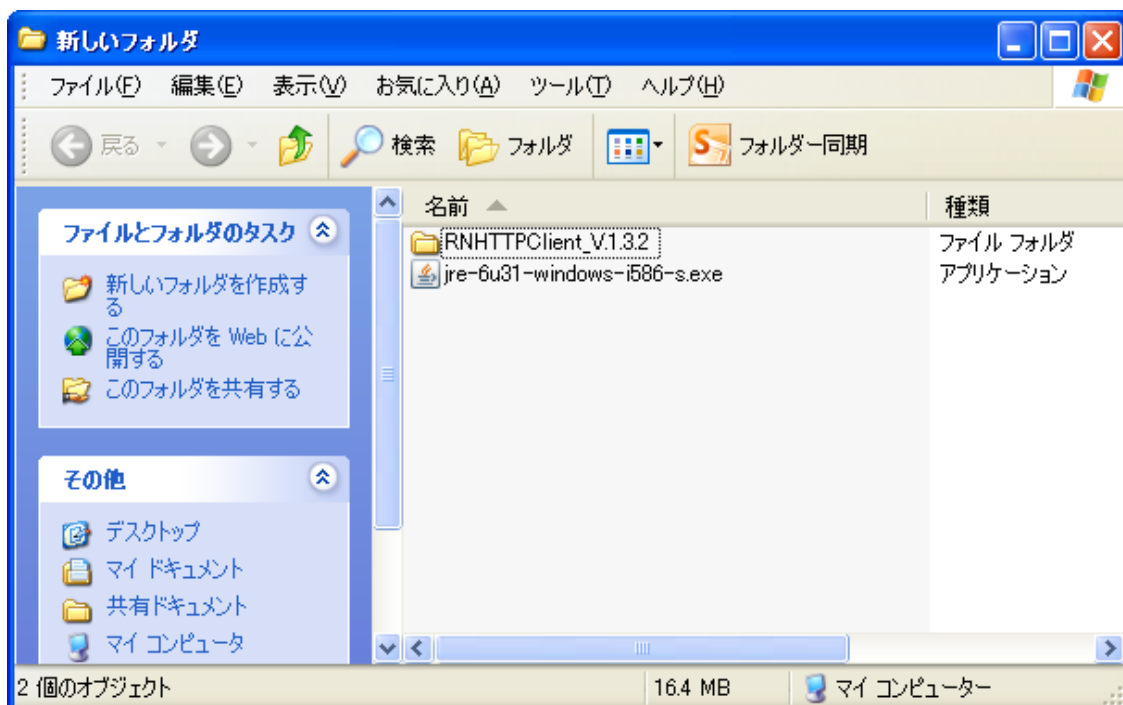
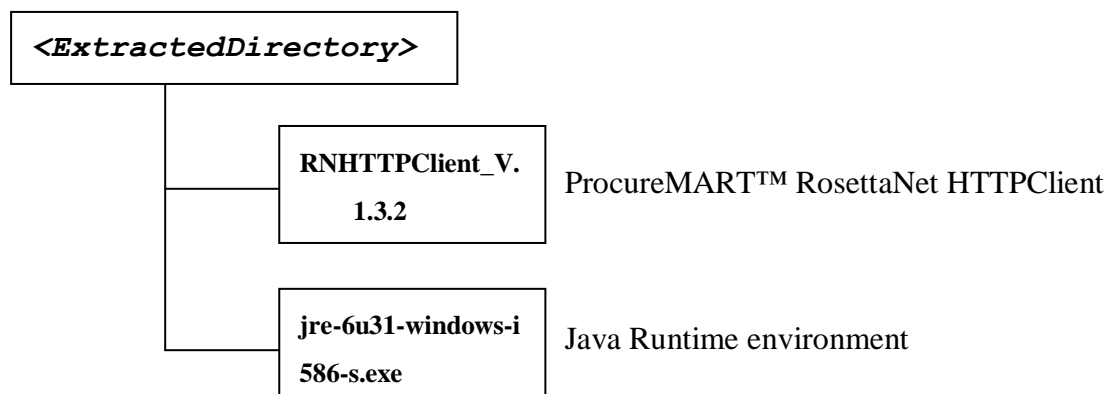


Figure 2: Folders in *<ExtractedDirectory>*

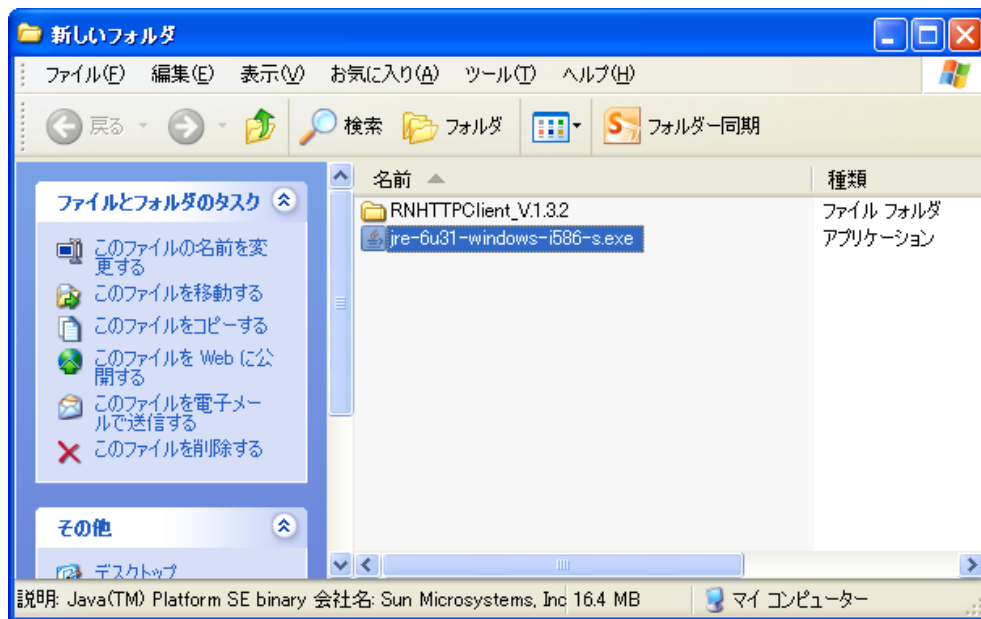
## 4 Setup Java JRE

### (Java Runtime Environment – Standard Edition)

If your system already has JRE1.5 or higher installer, the following steps in this chapter are not required. However, most Windows OS systems are not equipped with Java environment, and the installation of JRE is generally necessary. In this document, sample installation procedures for JRE1.6 are presented.

JRE can be found in the following folder extracted from ProcureMART™ RosettaNet HTTPClient distribution:

**<ExtractedDirectory>\jre-6u31-window-i586.exe**



**Figure 3: Java Runtime Environment setup program**

The included JRE file is for 32-bit OS environment. If you are using 64-bit OS environment (ex. Windows 2008 R2), download the according JRE file from URL: <http://java.com/ja/download/>.

## 4.1 Install JRE

The install folder can be allocated anywhere in the system. The default install path is as following:

**C:\Program Files\Java\jre6\**

Because a folder path containing “ ” (space) may cause trouble when generating batch script or being run through task manager, change of folder location as below is recommended:

**C:\JRE\1.6\**

This install folder is referred as “<JavaHome>” in this document.

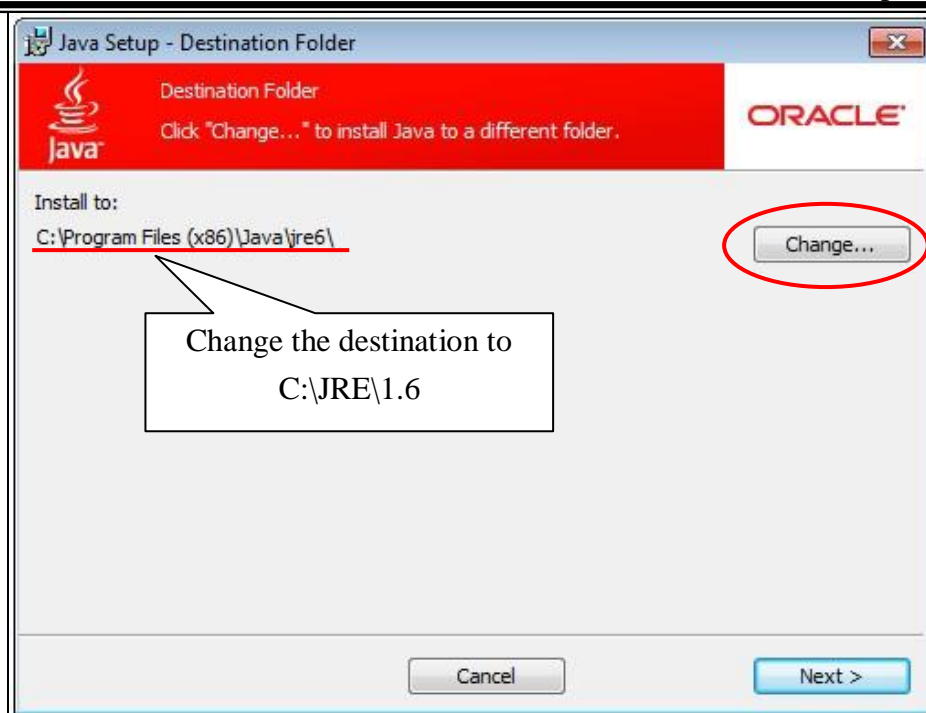
The subsequent install procedures are described by the following figures step by step. In this document, sample installation procedures for JRE1.6 are presented.



**Figure 4: Software license agreement dialog**

Read the software license agreement, and click “Install” to continue installation.

If you want to change the location of installation folder, check “Change destination folder” and specify the destination.



**Figure 5: Choose destination folder dialog**

JRE setup program will automatically install to the default folder of:

***C:\Program Files\Java\jre1.6***

To avoid “ ” (space) contained in the path which may cause troubles, change the destination of folder to;

***C:\JRE\1.6***

Click “Change...” button to change the destination folder, and choose “Next” to continue.

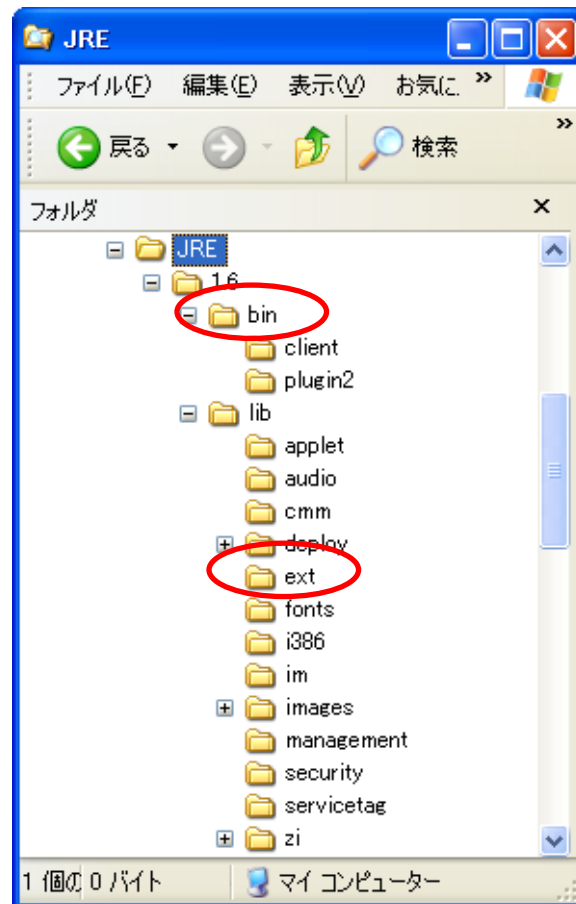


**Figure 6: Java Setup Complete dialog**

The installation of JRE will be completed as above.



## 4.2 Critical files



**Figure 7: JRE install folder (<JavaHome>)**

Figure 7 shows the folder after JRE is installed. Some critical files included in this folder. Note the following two files are especially crucial to run the software:

**<JavaHome>\bin\java.exe**

This is java virtual machine, and ProcureMART™ RosettaNet HTTPClient is launched through its command as;

**<JavaHome>\bin\java RNHTTPClient [options...]**

**<JavaHome>\lib\ext\**

This folder stores java library. All \*.jar (java library) files will be copied into this folder after the installation.

## 5 Setup Log4j

### 5.1 Extracting package

Log4j can be downloaded from the below URL:

<http://archive.apache.org/dist/logging/log4j/1.1.3/>

Log4j is distributed as a Zipped file. Extract the Log4j file as a first step. The folder can be extracted anywhere in the system, and it can be removed once the installation is completed.

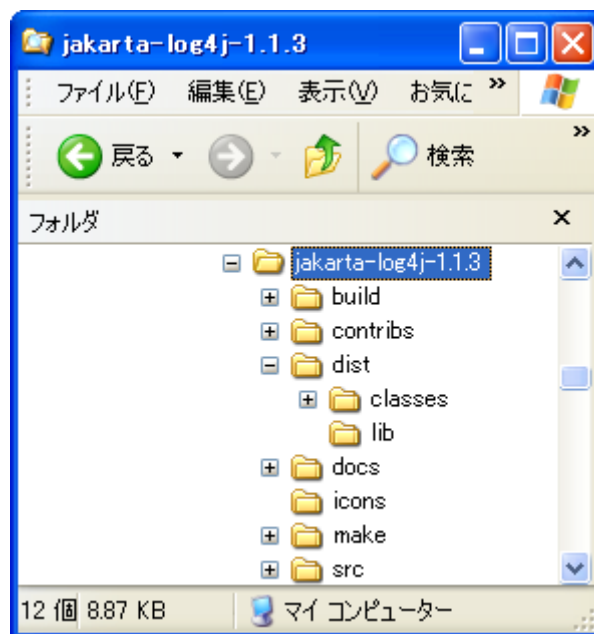


Figure 8: Log4j folder

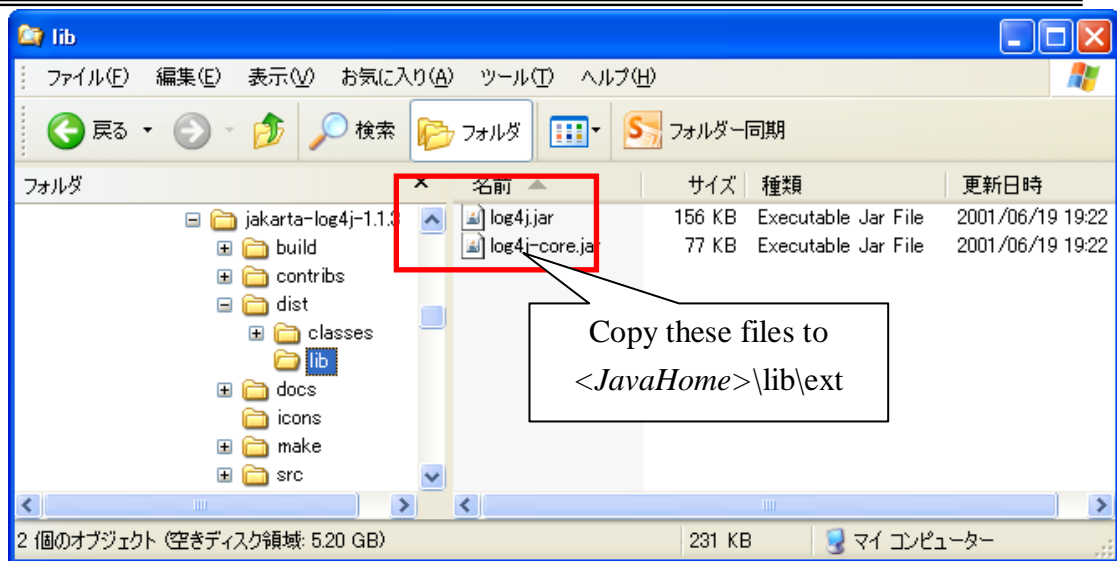
### 5.2 Install libraries

Log4j library is located in:

<jakarta-log4j-1.1.3>\dist\lib\

As shown in Figure 9, there are following two library files in the above folder:

- ✧ **log4j.jar**
- ✧ **log4j-core.jar**



**Figure 9: Log4j libraries in <jakarta-log4j-1.1.3>\dist\lib\**

Copy both of two files into the below JRE library extension directory.

**<JavaHome>\lib\ext**

## 6 Install ProcureMART™ RosettaNet HTTPClient

ProcureMART™ RosettaNet HTTPClient is located in

*<ExtractedDirectory>\RNHTTPClient\_V.1.3.2*

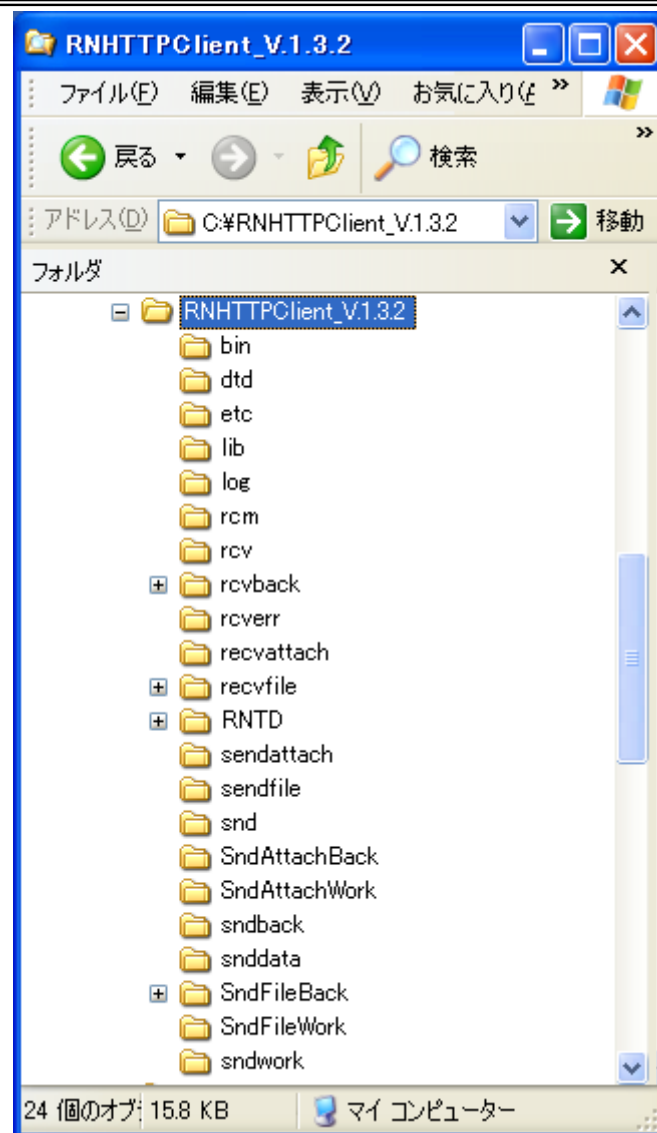
Copy the entire “RNHTTPClient\_V.1.3.2” folder to where you want the ProcureMART™ RosettaNet HTTPClient installed.

**Ex.)** *C:\RNHTTPClient\_V.1.3.2*

This folder is referred as *<BASEDIR>* in this document.

All the log file, EDI data file and backup file for EDI data are generated in *<BASEDIR>*, thus requiring sufficient disk space for installation.

When using multiple Login IDs in ProcureMART™ RosettaNet HTTPClient, corresponding ProcureMART™ RosettaNet HTTPClient has to be installed into separate folders by each ID.

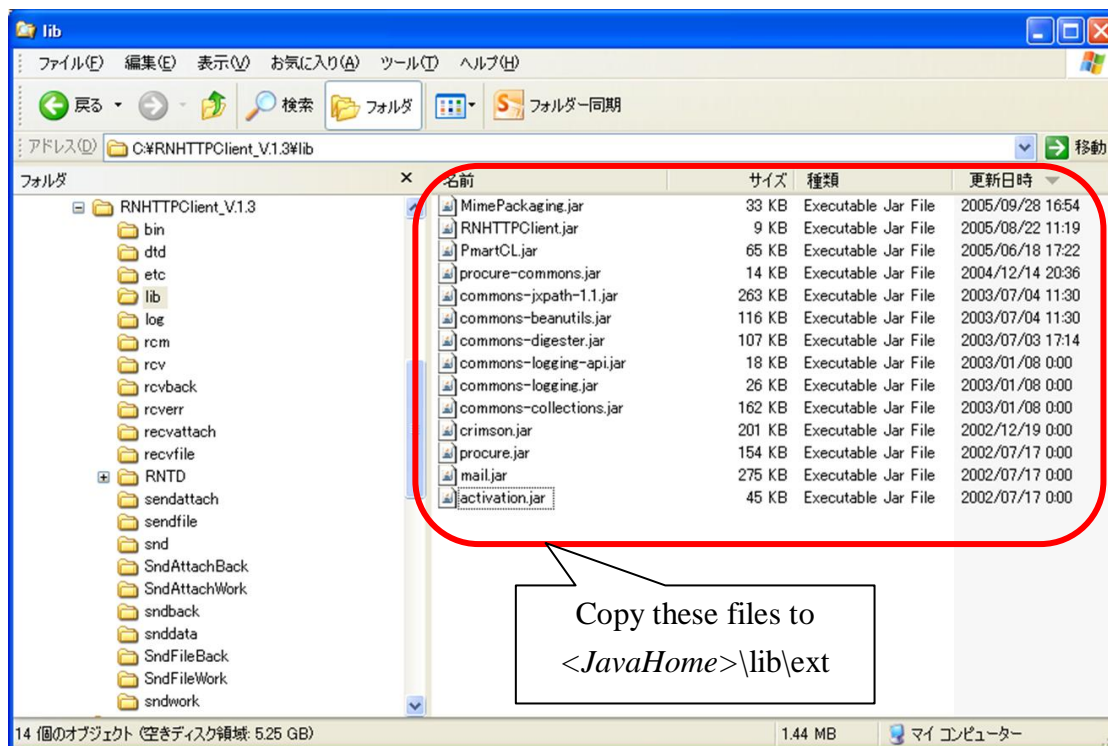


**Figure 10: RNHTTPClient\_V.1.3.2 <BASEDIR>**

Figure 10 shows the RNHTTPClient\_V.1.3.2 folder after successful copying.

## 6.1 Install library

Just same as the previous library files, copy the jar files in *<BASEDIR>\lib* to *<JavaHome>\ext\lib*.



**Figure 11: ProcureMART™ RosettaNet HTTPClient library files in *<BASEDIR>\lib***

## 7 Confirmation of copied library

At this point, all setup procedures for library file are completed. Make sure there are 16 files in `<JavaHome>\lib\ext\`, when you check with Windows Explorer. Figure 12 shows how `<JavaHome>\lib\ext\` folder will be displayed by Windows Explorer.

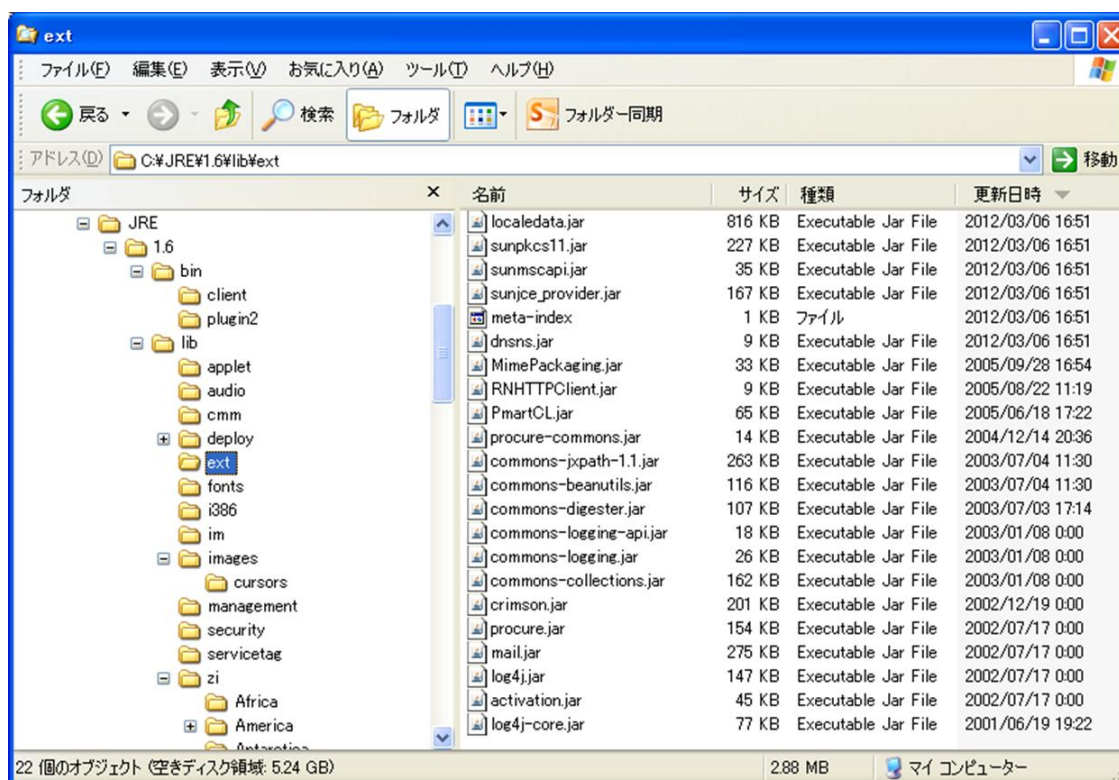


Figure 12: `<JavaHome>\lib\ext` folder

Table 1 shows the list of files that should be placed in <JavaHome>\lib\ext folder.  
Check if all files are installed successfully through the table.

Package	File name	File size (bytes)	Check
<b>Log4j</b>	<b>log4j.jar</b>	<b>158,892</b>	
	<b>log4-core.jar</b>	<b>78,140</b>	
<b>ProcureMART™ RosettaNet HTTPClient</b>	<b>MimePackaging.jar</b>	<b>32,969</b>	
	<b>RNHTTPClient.jar</b>	<b>8,755</b>	
	<b>PmartCL.jar</b>	<b>65,669</b>	
	<b>procure-commons.jar</b>	<b>13,414</b>	
	<b>commons-jxpath-1.1.jar</b>	<b>268,794</b>	
	<b>commons-beanutils.jar</b>	<b>118,726</b>	
	<b>commons-digester.jar</b>	<b>109,096</b>	
	<b>commons-logging-api.jar</b>	<b>18,404</b>	
	<b>commons-logging.jar</b>	<b>26,388</b>	
	<b>commons-collections.jar</b>	<b>165,119</b>	
	<b>crimson.jar</b>	<b>205,045</b>	
	<b>procure.jar</b>	<b>157,254</b>	
	<b>mail.jar</b>	<b>280,984</b>	
	<b>activation.jar</b>	<b>45,386</b>	

**Table 1 Files to be stored in <JavaHome>\lib\ext folder**



## 8 Edit configuration file

Configuration file is located in **<BASEDIR>\etc**. This file specifies important parameters such as server name, user ID, password, proxy settings and so on. The configuration file can be renamed as long as it is stored in **<BASEDIR>\etc** folder and can be set in full path expression as a parameter at executing ProcureMART™ RosettaNet HTTPClient command.

A sample configuration file is prepared at install as below:

**<BASEDIR>\etc\config.txt**

Editing this sample configuration file will be the simplest way to setup ProcureMART™ RosettaNet HTTPClient. **<BASEDIR>\etc\config.txt** will be referred as “configuration file” in the following procedures.

The contents of configuration file automatically stored by installer are described below. This file will not work unless modification is applied.

```
#
# RosettaNet HTTP Client Config File
#
BASEURI=https://filetrans.procuremart.ne.jp/servlet/
USERID=XXXXX
PASSWD=XXXXX
HOST=filetrans.procuremart.ne.jp
PORT=443
#PROXYHOST=xxx.fujitsu.com
#PROXYPORT=8080
TIMEOUT=5
RETRY=2
RETRYTIME=6
BASEDIR C:\\RNHTTPClient
DATATYPE=0

SENDFILE=C:\\RNHTTPClient\\sendfile
SENDATTACH=C:\\RNHTTPClient\\sendattach
RCVFILE=C:\\RNHTTPClient\\recvfile
RCVATTACH=C:\\RNHTTPClient\\recvattach
```

The line starting with “#” is for comment.

The record format is;

**<Key> = <Value>**

All parameters except **PROXYHOST** and **PROXYPORT** are required. If the network can directly connect to ProcureMART™ server, **PROXYHOST** and **PROXYPORT** do not have to be specified.

In case if the network connection to ProcureMART™ server is through Proxy, set Proxy server name to *PROXYHOST* and Proxy port number to *PROXYPORT*.

Edit this configuration file for other parameters according to “Appendix B: ProcureMART™ RosettaNet HTTPClient setup information”.

## 9 Edit log4j properties file

Log4j configuration file is also located in <BASEDIR>\etc. The filename is;

**<BASEDIR>\etc\PmartClient.properties**

Though this file does not have “txt” extension, it is generated as a simple text file.

Edit <BASEDIR> part of the file with text editor like notepad as described in No.3 row in Table 2. (<BASEDIR> is set as “C:\\ProcureMART” by default)

1	<i>log4j.rootCategory=DEBUG, R</i>
2	<i>log4j.appender.R=org.apache.log4j.RollingFileAppender</i>
3	<i>log4j.appender.R.File=c:\\ProcureMART\\log\\PmartClient.log</i>
4	<i>log4j.appender.R.layout=org.apache.log4j.PatternLayout</i>
5	<i>log4j.appender.R.layout.ConversionPattern=%d %m%n</i>

**Table 2 Items specified in “PmartClient.properties”**

The record format is as below;

**<KEY> = <Value>**

The line starting with ‘#’ is for comment.

### NOTE:

You have to use “\\”(double backslash) as a delimiter for path description in log4j configuration file.

Below is the original content of log4j configuration file at the installation.

```
# PmartClient.properties
#log4j.rootCategory=DEBUG, stdout, R
log4j.rootCategory=DEBUG, R

#log4j.appender.stdout=org.apache.log4j.FileAppender
#log4j.appender.stdout.File=/var/log/syslog
#log4j.appender.stdout.layout=org.apache.log4j.PatternLayout
#log4j.appender.stdout.layout.ConversionPattern=[%t] %-5p (%F:%L) - %m%n

log4j.appender.R=org.apache.log4j.RollingFileAppender
log4j.appender.R.File=c:\\ProcureMART\\log\\PmartClient.log
log4j.appender.R.layout=org.apache.log4j.PatternLayout
log4j.appender.R.layout.ConversionPattern=%d %m%n
```

## 10 Installation Check

Check the result of installation by executing command from Command Prompt. Command Prompt can be found in [Start] -> [All Programs] -> [Accessories] -> [Command Prompt].



**Figure 13: “Start” menu to “Command Prompt”**

## 10.1 Check Java Runtime Environment

Execute the following command where <JavaHome> is the folder JRE is installed.

**<JavaHome>\bin\java -version**

If JRE is successfully installed, the command will result in displaying the version of JRE. Check if the version displayed matches the version installed. Below is an example of the result:

```
C:\>C:\JRE\1.6\bin\java -version
java version "1.6.0_31"
Java(TM) SE Runtime Environment (build 1.6.0_31-b05)
Java HotSpot(TM) Client VM (build 20.6-b01, mixed mode, sharing)
```

### Sample result of checking JRE version

If the version is not displayed properly, possible reasons can be;

- Making typo in the command
  - Check again if input of the command path is correct
- Conflicting with the version of previously installed JRE
  - If either JDK or JRE have been installed previously, the remaining CLASSPATH environment variables may cause conflict. Since ProcureMART™ RosettaNet HTTPClient does not have individual setting for CLASSPATH, check with the following command:

**set CLASSPATH**

The below example shows the correct result;

```
C:\>set CLASSPATH
Environment variable CLASSPATH not defined
```

## 10.2 Check ProcureMART™ RosettaNetHTTPClient library

Executing the following command will result in displaying the usage and version of ProcureMART™ RosettaNet HTTPClient.

```
<JavaHome>\bin\java RNHTTPClient
```

If ProcureMART™ RosettaNet HTTPClient is successfully installed, the above command shows the version information as;

<pre>C:\&gt;C:\jdk1.6\bin\java RNHTTPClient RosettaNet HTTP client version1.3.2 2006-03-31 Usage:java RNHTTPClient config snd   rcv fileid       java RNHTTPClient config rcm fileid sequence_no</pre>
--

### Sample result of checking ProcureMART™ RosettaNet HTTPClient library

If the version is not displayed properly, possible reasons can be;

- PmartCL.jar is not stored in **<JavaHome>\lib\ext**
- The executing java command is not the one indicated as;  
**<JavaHome>\bin\java.exe**

It may be possible that PATH environment variable is pointing to other java environment. In that case, fix the PATH environment.

**10.3 Check log4j library.**

In order to check log4j library, confirm the log output by intentionally generating an error message. Below example shows how to cause an error by trying to send a non-existing file called “NEVERUSE”. The error message is output in the log file as configured by log4j properties file.

```
<JavaHome>\bin\java.exe RNHTTPClient configfile snd
NEVERUSE
```

“*configfile*” indicates the full-path for the configuration file.

Below is an example of the result:

```
C:\>C:\JRE\1.6\bin\java.exe RNHTTPClient C:\RNHTTPClient_V.1.3.2\etc\config.txt snd
NEVERUSE
(I00002) INFO:Send File no exist
```

**Sample result of non-existing file error**

Then, check the log file. If log4j is working successfully, you can find an error message like below as output:

```
2001-08-13 00:35:53,409 [trc] NEVERUSE null (I00002) INFO:Send File no exist
```

To view the contents of log file, you can either use general text editor or display through ProcureMART™ RosettaNet HTTPClient. Executing the below command will display the error records of log file on the screen.

```
<JavaHome>\bin\java LogExtract configfile trc
```

```
C:\>C:\JRE\1.6\bin\java LogExtract C:\RNHTTPClient_V.1.3.2\etc\config.txt trc
start...
2001-08-13 03:36:40,938 [trc] NEVERUSE null (I00002) INFO:Send File no exist
(I00006) INFO: ProcureMART LogExtract Normal End
```

**Sample result of log display**

## 11 Appendix A: list of figures

Figure 1: ProcureMART™ RosettaNet HTTPClient System Architecture .....	2
Figure 2: Folders in <i>&lt;ExtractedDirectory&gt;</i> .....	4
Figure 3: Java Runtime Environment setup program.....	5
Figure 4: Software license agreement dialog.....	6
Figure 5: Choose destination folder dialog.....	7
Figure 6: Java Setup Complete dialog.....	8
Figure 7: JRE install folder ( <i>&lt;JavaHome&gt;</i> ).....	9
Figure 8: Log4j folder .....	10
Figure 9: Log4j libraries in <i>&lt;jakarta-log4j-1.1.3&gt;\dist\lib\</i> .....	11
Figure 10: RNHTTPClient_V.1.3.2 <i>&lt;BASEDIR&gt;</i> .....	13
Figure 11: ProcureMART™ RosettaNet HTTPClient library files in <i>&lt;BASEDIR&gt;\lib</i> .....	14
Figure 12: <i>&lt;JavaHome&gt;\lib\ext</i> folder .....	15
Figure 13: “Start” menu to “Command Prompt” .....	20



## 12 Appendix B: ProcureMART™ RosettaNet

### HTTPClient setup information

#### 12.1 Java Runtime Environment

1	Version	Java version 1.6.0_31	
	<JavaHome>	Sample	C:\jre\1.6\

#### 12.2 ProcureMART™ RosettaNet HTTPClient install folder

2	<BASEDIR>	Sample	C:\RNHTTPClient_V.1.3.2

#### 12.3 Configuration file

3	File path	Sample	<BASEDIR>\etc\<ANYKINDOFNAME>
			C:\RNHTTPClient_V.1.3.2\etc\config.txt
4	BASEURI	https://filetrans.procuremart.ne.jp/servlet/	
5	USERID		
6	PASSWD		
7	HOST	filetrans.procuremart.ne.jp	
8	PORT <sup>i</sup>	443	
9	PROXYHOST <sup>ii</sup>		
10	PROXYPORT		
11	TIMEOUT	5	
12	RETRY	2	
13	RETRYTIME <sup>iii</sup>	10	
14	BASEDIR <sup>iv, v</sup>	C:\RNHTTPClient_V.1.3.2	
15	DATATYPE <sup>vi</sup>	0	

#### 12.4 Log property file

16	Property file	Sample	<BASEDIR>\etc\PmartClient.properties
17	Log file	Sample	<BASEDIR>\log\PmartClient.log

**12.5 File Type**

	<b>Data Type</b>	<b>File Type (8byte fixed)</b>
	<b>Purchase Order</b>	

- 
- <sup>i</sup> (**443**) is for HTTPS connection, and (**80**) is for HTTP connection.
  - <sup>ii</sup> Input the proxy URL when your network connection is through proxy server.
  - <sup>iii</sup> Make sure the retry time is longer than 10 minutes.
  - <sup>iv</sup> Do not add any separator at the end. When there is an extra separator, RosettaNet HTTPClient cannot read the configuration file correctly. For Windows OS environment, the file separator means '\\\' or '\\\'.
  - <sup>v</sup> This “BASEDIR” should be same as the value of Field No.2 <BASEDIR>.
  - <sup>vi</sup> If (**0**) is specified, the data will be transmitted as it is. This is the default setting.